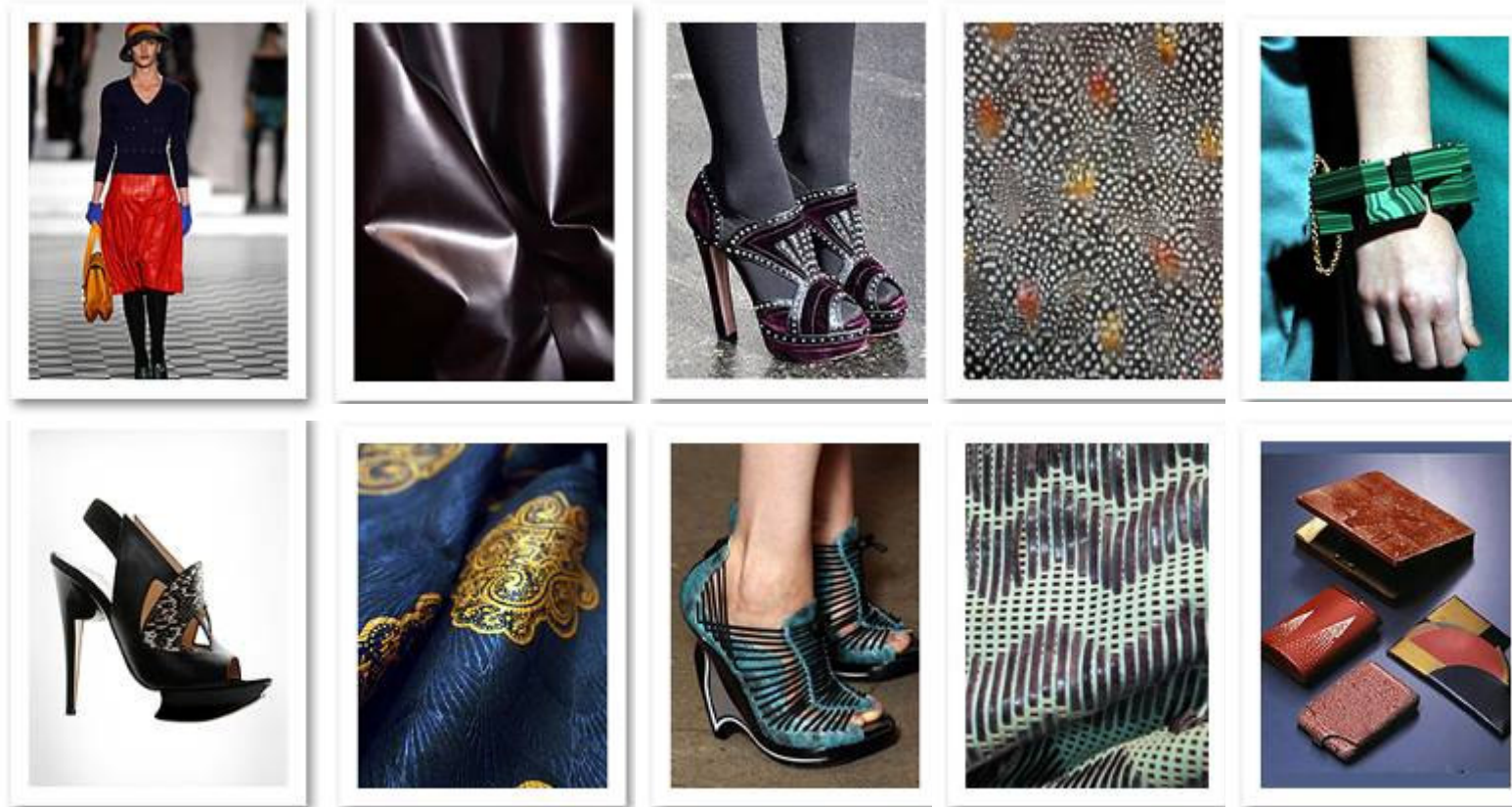


## Footwear Close-to-Season design file: Tribal Deco

### TRENDS FOOTWEAR TREND ANALYSIS

The WGSN Footwear team presents the first of a series of Close-to-Season design files aimed at bridging the gap between catwalk information and future trends.



#### Mood

The traditionally bold tribal aesthetic is reworked with the refined politeness of Art Deco. Striking patterns are fused with controlled geometry for a more contemporary tribal aesthetic.

For hardware details and collection: [http://www.wgsn.com/members/trends-info/fast-track/features/ti2010mar01\\_090821\\_a](http://www.wgsn.com/members/trends-info/fast-track/features/ti2010mar01_090821_a)

## TRADE SHOWS

WGSN highlights the key accessories trends for autumn/winter 2010/11 from Premiere Classe.



- 70s-style footwear and accessories have a vintage Gucci feel
- Suede and corduroy is mixed with leather trim
- Traditional walking boots are reinvented in heeled variations

## TRADE SHOWS

WGSN highlights the key footwear trends for autumn/winter 2010/11 from Micam.



Fabio Rusconi



J'ma



N.D.C



Alexandra Birman



Tatoosh Kids

### Key trends

- Ballerinas
- Exotic skins
- Fur
- Green
- Subtle decorative hardware
- Ponyskin
- High vamp peep toes

- Peep-toe constructions continue into the winter season for high vamped styles and booties
- Androgynous lace-up styles and simple construction uppers work well with peep toe winter styles

## TRENDS ACCESSORIES TREND ANALYSIS

WGSN's Footwear and Accessories team chooses its top trends and key items from the Paris womenswear shows. This is a precursor to the detailed Key Item Analysis report.

### Exotic leather



Lanvin



Louis Vuitton



Dries Van Noten

Classically elegant and updated high-end leather accessories were shown in luxurious exotic leathers throughout the collections. Small-scale snakeskin, alligator and ostrich are the key exotic leathers for this season and work well for the overall reworked prim vintage trend for women's accessories noted during Paris this season.